

Sink Circolari Copper

Kitchen Sinks

Code: 1130 068



DETAILS

Edge/Installation Type Flush-mount | Top-mount

Material AISI 304 stainless steel

Texture Foster brushed

Finish PVD

Coloring Copper

Base 45 cm

Dimensions \varnothing 425

Bowl dimension \varnothing 380mm

Number of bowls 1 bowl

Built-in hole

[View technical data sheet](#)

Standard fittings

Fixing hooks, gasket, drain, overflow and siphon, boxed packing

Mixer holes

No standard holes

Drainer

No

Notes:

Foster brushed sink with highly effective concentric polishing

FEATURES

Added value

Foster uses steel thicknesses higher than those used on average by other manufacturers. This is how, thanks to our long experience, we know how to make sinks of superior quality and with a better resistance to aging.

Basket 3,5" waste fitting

The drain is equipped with a large 3.5" drain, with the practical basket cap that prevents the discharge of solid parts.

Copper

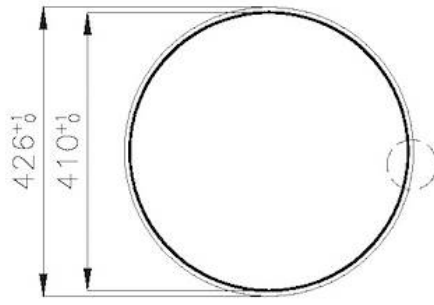
The Copper finish is obtained by treating steel with a physical process called PVD (Physical Vacuum Deposition) which deposits particles of noble metals on the surface. The result is a unique and refined aesthetic effect, and an improvement of the mechanical properties of the steel which is more resistant to impact and scratches.

High thickness

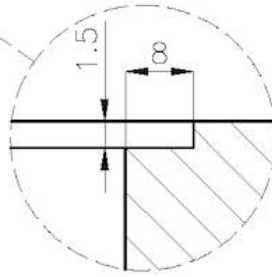
1mm thick steel. A significant thickness, which guarantees the maximum sturdiness and durability.

TECHNICAL DATA

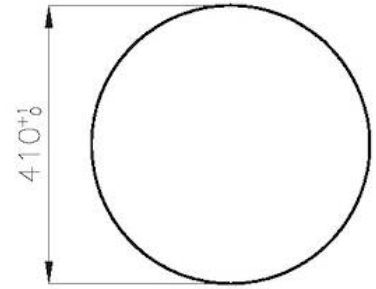
FT



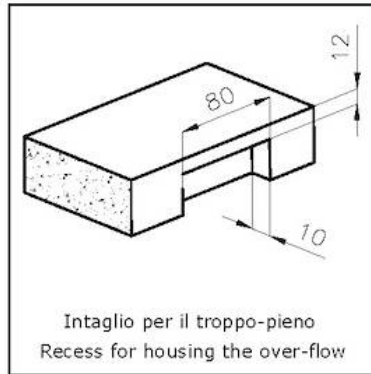
Cut out size
Dimensioni per foratura top



FTS



Cut out size
Dimensioni per foratura top



Intaglio per il troppo-pieno
Recess for housing the over-flow

GALLERY



OPTIONAL ACCESSORIES



Iroko-wood chopping board
8648 002

RECOMMENDED PAIRINGS



Mixer Tap Omega Plus Copper
8498 858

OPTIONAL AUTOMATIC WASTE FITTINGS



**Space Push Copper automatic
waste fitting**

8407 122